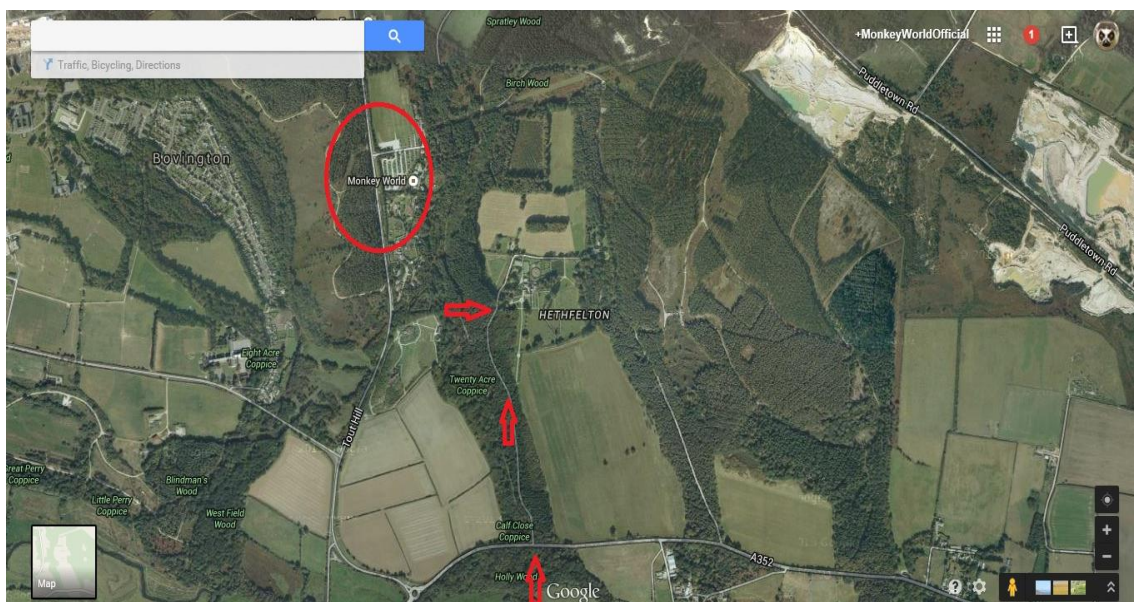


Jim Cronin Memorial Fund Education Centre

HETHFELTON HOUSE. Hethfelton, Wareham, Dorset. BH20 6HS



The entrance to the property is on the A352 which runs between Wareham & Wool.

**From Wareham**

Drive along the A352 towards Wool, go past the speed camera on the left, go past the Stokeford Inn pub on the right, just before the 40mph speed limit signs there is a turning on the right in the trees marked as private drive. Follow the driveway up through the trees, take the right hand fork, marked Hethfelton House. Proceed up the driveway and following parking signs.

If you miss the right hand turning, continue up the hill to the roundabout, go around the roundabout and back down the hill, the west turning to the property from this direction is on the left just by the national speed limit signs.

**From Wool**

Drive past The Ship Pub on your left, go to the left over the railway crossing and past the garage on your right, continue on to the roundabout, take the second exit at the roundabout signposted Wareham, almost immediately you will see the national speed limit sign on the left, the driveway to the property is just behind the sign on the left in the trees marked as private drive. Follow the driveway up through the trees, take the right hand fork, marked Hethfelton House. Before you get to the metal gates, there is a post on the right, press the open button & then drive up to the house.